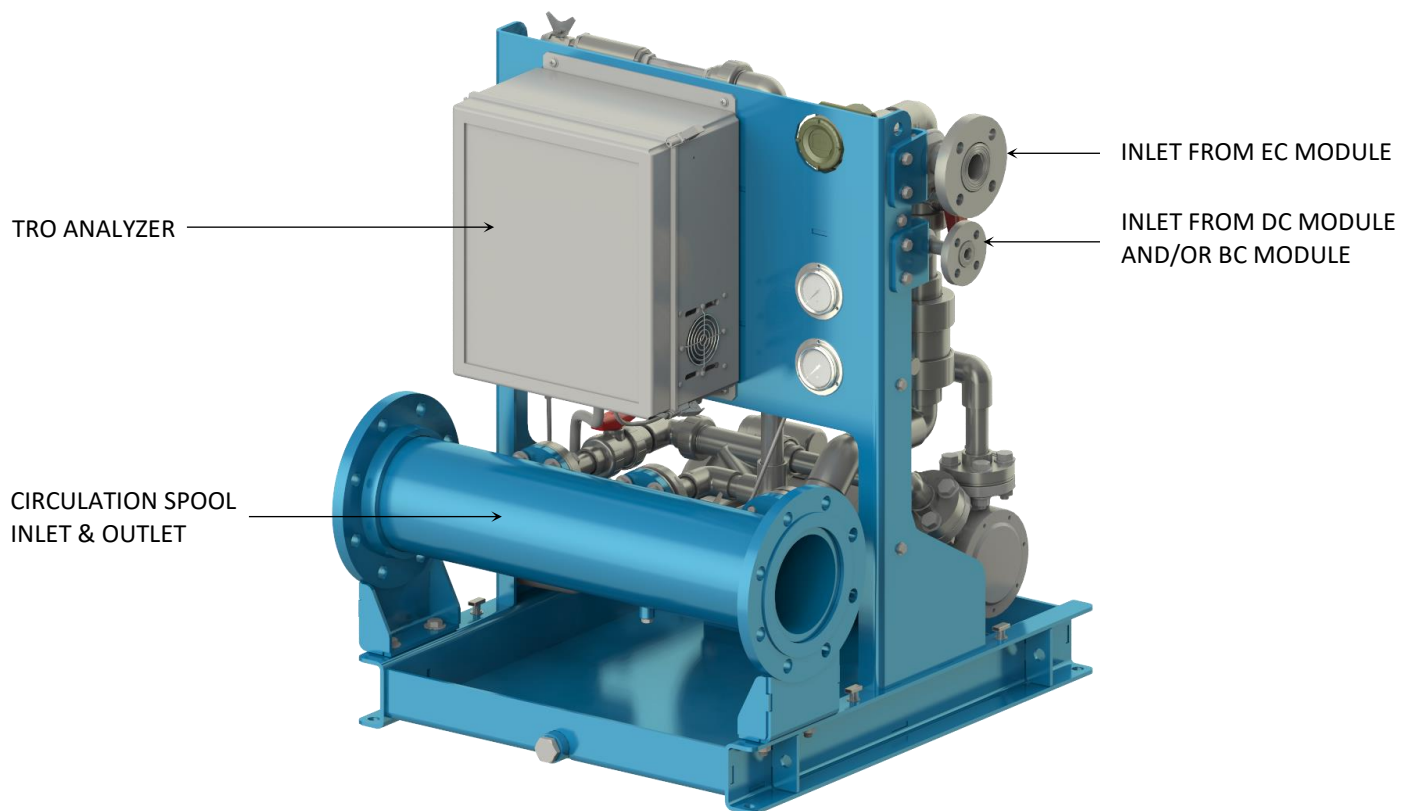


TECHNICAL OVERVIEW

With the Envirocleanse inTank™ BWTS, ballast water is pumped from one ballast water tank at a time, passed through a Dosing Module, and returned to the same ballast water tank through in-tank mixing nozzles. The Dosing Module controls ballast water treatment by injecting disinfectant as needed. To know how much disinfectant is needed, the Dosing Module monitors Total Residual Oxidant (TRO) using a TRO analyzer. TRO is the concentration of disinfectant in the ballast water, expressed in milligrams per liter (mg/L). General Service (G) Dosing Module models are available for installation in safe areas such as the Engine Room, and Explosion-Proof / EX-Rated (X) models are available for installation in hazardous areas such as Cargo Pump Rooms.

MODULE EXAMPLE



KEY PARAMETERS

Model No.	Flow Capacity (m ³ /hr)	Pipe Size (DN)	Footprint Dimensions (m)			Dry Weight (kg)	Operating Weight (kg)
			Length	Width	Height		
DM065G (DM065X)	20	65	0.7	0.8	1.0	177 (208)	184 (215)
DM080G (DM080X)	50	80	0.7	0.8	1.0	182 (212)	191 (221)
DM100G (DM100X)	80	100	0.7	0.8	1.0	190 (220)	201 (231)
DM150G (DM150X)	200	150	0.7	0.9	1.0	211 (242)	230 (261)
DM200G (DM200X)	350	200	0.7	0.9	1.0	238 (269)	268 (298)
DM250G (DM250X)	550	250	0.7	1.0	1.0	282 (312)	337 (367)

NOTE: Differences in the key parameters associated with the Explosion-Proof / EX-Rated (X) models are shown in parenthesis.